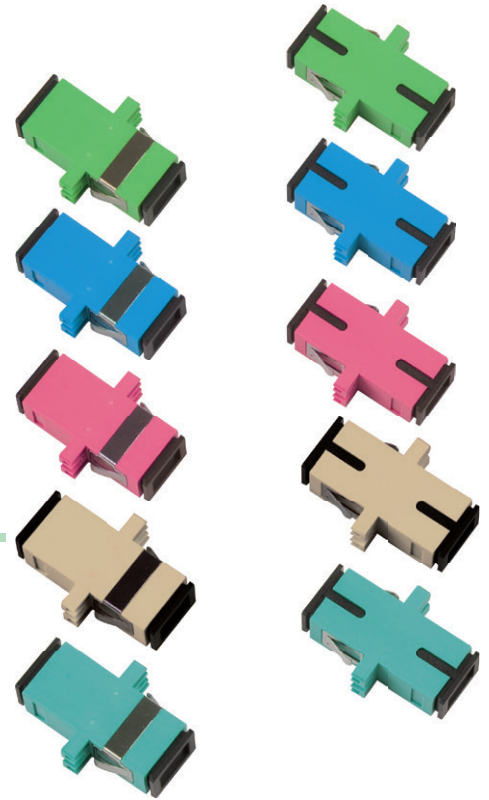


# SC ADAPTORS

Alfafonet offers a range of high quality SC adaptors which have high precision alignment sleeves for reliability and improved reconnectability. For Singlemode applications a ceramic sleeve is supplied to ensure a high precision alignment. For multimode applications a phosphor bronze or ceramic sleeve is supplied. The housing is available in different colours with options for flange or flangeless body, metal clips or inbuilt clips.



## Features

- ✓ Complies with IEC 61754-4 and IEC 60874-14 standards
- ✓ High precision alignment sleeve
- ✓ Low insertion loss and improved reconnectability
- ✓ RoHS, REACH compliant
- ✓ Available in simplex and duplex adaptors
- ✓ Also available are SC simplex adaptors with a shutter

## Applications

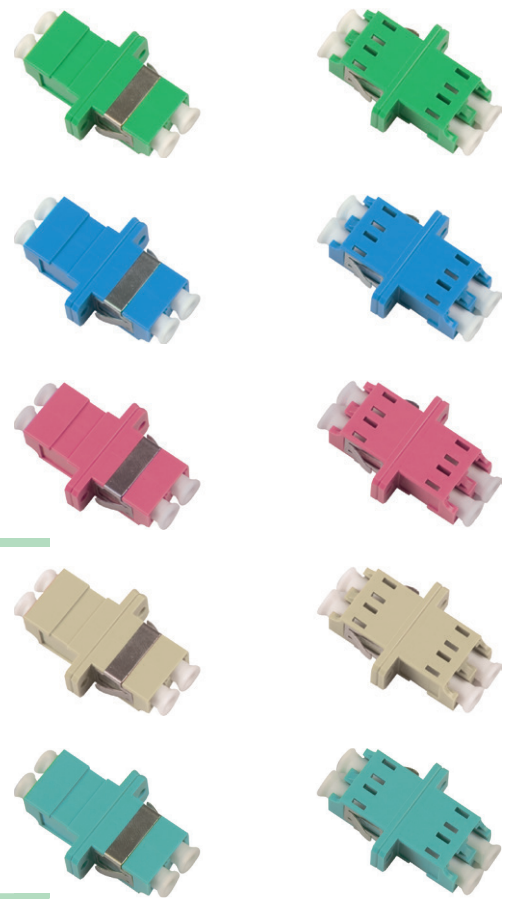
- ✓ Data centers, premise installations, telecommunication networks
- ✓ Ethernet, fiber channel, ATM, LAN, MAN and WAN

## Technical Specification

Optical Performance	Ceramic	Phosphor Bronze	Conformance
Insertion Loss (Typ)	0.1dB	0.15 dB	IEC 61300-3-4
Mating Durability	500		IEC 61300-2-2
Receptacle Retention Force	2N - 5.9N		IEC 61754-4
Operating Temperature	-25 to +70°C, 12 Cycles		IEC 61300-2-22

# LC ADAPTORS

Alfafonet offers a range of high quality LC adaptors which have high precision alignment sleeves for reliability and improved reconnectability. The LC adaptors come with ceramic sleeves for singlemode and phosphor bronze or ceramic sleeves for multimode. The housing is available in different colors with options for flange or flangeless body and metal or inbuilt clips.



## Features

- ✓ Complies with IEC 61754-20
- ✓ High precision alignment sleeve
- ✓ Low insertion loss and improved reconnectability
- ✓ RoHS, REACH compliant

## Applications

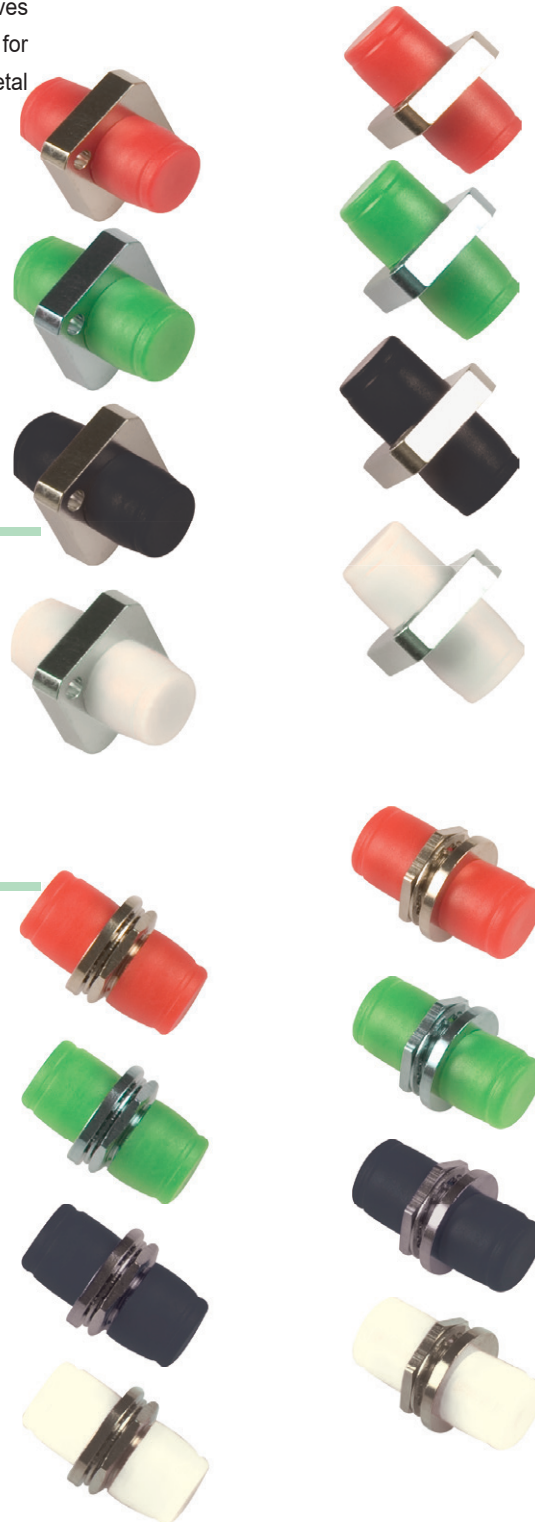
- ✓ Telecommunications networks
- ✓ CATV, LAN, MAN and WAN application
- ✓ Data processing networks
- ✓ Cable television
- ✓ Fiber to the home
- ✓ Premises distribution

## Technical Specification

Optical Performance	Ceramic	Phosphor Bronze	Conformance
Insertion Loss (Typ)	0.1dB	0.15 dB	IEC 61300-3-4
Mating Durability	500		IEC 61300-2-2
Receptacle Retention Force	1N - 2.5N		IEC 61754-20
Operating Temperature	-25 to +70°C, 12 Cycles		IEC 61300-2-22

# FC ADAPTORS

Alfafonet offers a range of high quality FC adaptors featuring precision alignment sleeves for high reliability and better reconnectability. FC adaptors come with ceramic sleeves for singlemode and phosphor bronze or ceramic sleeve for multimode. The housing has a metal body.



## Features

- ✓ Complies with IEC 61754-13 and TIA 604-4-A standards
- ✓ High precision alignment sleeve for low insertion loss
- ✓ Low insertion loss and improved reconnectability
- ✓ Narrow key, 2.06 mm for APC and UPC connectors
- ✓ RoHS, REACH compliant
- ✓ Available in simplex and duplex adaptors
- ✓ Also available in simplex only with DD footprint

## Applications

- ✓ Telecommunications networks
- ✓ Local area networks
- ✓ Data processing networks
- ✓ Cable television
- ✓ Premises distribution
- ✓ Test and laboratory equipment
- ✓ Industrial and military application

## Technical Specification

Optical Performance	Ceramic	Phosphor Bronze	Conformance
Insertion Loss (Typ)	0.1dB	0.15 dB	IEC 61300-3-4
Mating Durability	500		IEC 61300-2-2
Receptacle Retention Force	2N - 5.9N		IEC 61754-20
Operating Temperature	-25 to +70°C, 12 Cycles		IEC 61300-2-22

# ST ADAPTORS

Alfafonet ST adaptors have high precision alignment sleeves for reliability and better reconnectability. ST adaptors come with a ceramic sleeves for the singlemode phosphor bronze or ceramic sleeve for multimode. The housing is available in double D footprint type.



## Features

- ✓ Complies with IEC 61754-12
- ✓ Low insertion loss and improved reconnectability
- ✓ RoHS, REACH compliant
- ✓ Available in simplex or duplex

## Applications

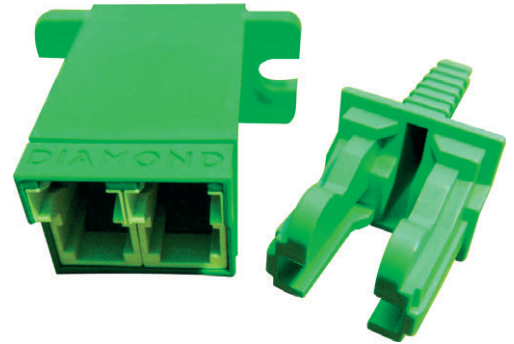
- ✓ Data processing networks
- ✓ Premises distribution

## Technical Specification

Optical Performance	Ceramic	Phosphor Bronze	Conformance
Insertion Loss (Typ)	0.1dB	0.15 dB	IEC 61300-3-4
Mating Durability	500		IEC 61300-2-2
Receptacle Retention Force	2N - 5.9N		IEC 61754-20
Operating Temperature	-25 to + 70°C, 12 Cycles		IEC 61300-2-22

## E2000 ADAPTORS

Alfafonet offers a range of high quality E2000 adaptors which have high precision alignment sleeves for reliability and better reconnectability. Each E2000 connector has an inbuilt mechanism to open the shutter and guide the ferrule in the alignment sleeve. E2000 adaptors come with a ceramic sleeves for the singlemode and phosphor bronze or ceramic sleeves for the multimode. The housing is available in different colours and a flangeless body option.



### Features

- ✓ Complies with IEC 61754-15
- ✓ High precision alignment sleeve
- ✓ Low insertion loss and high reconnectability
- ✓ Narrow key, 2.06 mm for APC and UPC connectors
- ✓ APC and UPC connectors
- ✓ Available in simplex only

### Applications

- ✓ Suitable for high power laser applications
- ✓ Telecommunications networks
- ✓ WDM, DWDM applications
- ✓ Testing and measurement equipment

### Technical Specification

Optical Performance	Ceramic	Phosphor Bronze	Conformance
Insertion Loss (Typ)	0.1dB	0.15 dB	IEC 61300-3-4
Mating Durability	500		IEC 61300-2-2
Receptacle Retention Force	2N - 5.9N		IEC 61754-20
Operating Temperature	-25 to + 70°C, 12 Cycles		IEC 61300-2-22

# HYBRID ADAPTORS

Alfafonet hybrid adaptors are used for mating two different style connectors. Alfafonet hybrid adaptors conform to international standards, are quality tested, and are available in singlemode, multimode and many different connector type configurations.



## Features

- ✓ Complies with IEC, TIA/EIA, Telcordia standards
- ✓ High precision alignment sleeve
- ✓ Low insertion loss and high reconnectability
- ✓ Narrow key, 2.06 mm for APC and UPC connectors
- ✓ RoHS, REACH compliant
- ✓ Available in plastic or metal body

## Applications

- ✓ Telecommunications networks
- ✓ Local area networks
- ✓ Data processing networks
- ✓ Cable television
- ✓ Premises distribution
- ✓ Test and laboratory equipment
- ✓ Industrial and military application

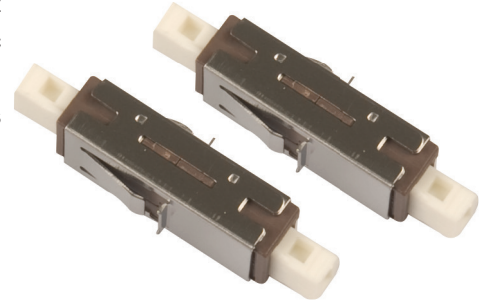
## Technical Specification

Optical Performance	Ceramic	Phosphor Bronze	Conformance
Insertion Loss (Typ)	0.1dB	0.15 dB	IEC 61300-3-4
Mating Durability	500		IEC 61300-2-2
Receptacle Retention Force	2N - 5.9N		IEC 61754-13
Operating Temperature	-25 to + 70°C, 12 Cycles		IEC 61300-2-22



# MU ADAPTORS

Alfafonet offers a range of high quality MU adaptors which have high precision alignment sleeves for reliability and improved reconnectability. For Singlemode applications a ceramic sleeve is supplied to ensure a high precision alignment. For multimode applications a phosphor bronze sleeve is supplied. The housing is available in different colours with options for flange or flangeless body, metal clips or inbuilt clips.




---

## Features

- ✓ Complies with IEC 61754-4 and IEC 60874-14 standards
- ✓ High precision alignment sleeve
- ✓ Low insertion loss and improved reconnectability
- ✓ RoHS, REACH compliant
- ✓ Available in simplex and duplex adaptors

---

## Applications

- ✓ Data centers, premise installations, telecommunications, networks
- ✓ Ethernet, fiber channel, ATM, LAN, MAN and WAN

## Technical Specification

Optical Performance	Ceramic	Phosphor Bronze	Conformance
Insertion Loss (Typ)	0.1dB	0.15 dB	IEC 61300-3-4
Mating Durability	500		IEC 61300-2-2
Receptacle Retention Force	1N - 2.5N		IEC 61754-20
Operating Temperature	-25 to + 70°C, 12 Cycles		IEC 61300-2-22

# ATTENUATORS FC, SC, LC, ST and MU

Alfafonet singlemode and multimode attenuators are used in communication systems to reduce optical power launched onto the photo detector. These high performance devices are designed to give accurate attenuation over a wide range of wavelengths. The plug type configuration allows them to be used directly on the end of patch cord, which in turn can insert directly into an adaptor.



## Features

- ✓ Plug-in type
- ✓ Adapter type
- ✓ In-line type
- ✓ Available in FC, SC, LC, ST and MU connector styles with UPC or APC finish.
- ✓ Attenuator provide ultra-low return loss and are available from 1 dB to 30 dB.
- ✓ Accurate attenuation
- ✓ Ultra low back reflection
- ✓ Broad wavelength band
- ✓ Flat response over a wavelength range
- ✓ Environmentally stable

## Applications

- ✓ Telecommunications networks
- ✓ Fiber optic sensors
- ✓ Test and measurement
- ✓ CATV
- ✓ LAN and WAN
- ✓ FTTX

## Technical Specification

Parameter	
Available range of Attenuation	1 to 30 dB with 1 dB increments
Operating Wavelength	1310 and 1550 nm (or single wavelength)
Operating Band Pass	Dual Window      1310 and 1550 nm ( ±25 nm)
Attenuators 5 dB	± 0.5 dB
Attenuators 6 to 30 dB	± 10% of attenuation
Resistance	UPC=55 dB    APC=60 dB
International Standard	Telcordia GR-910-CORE